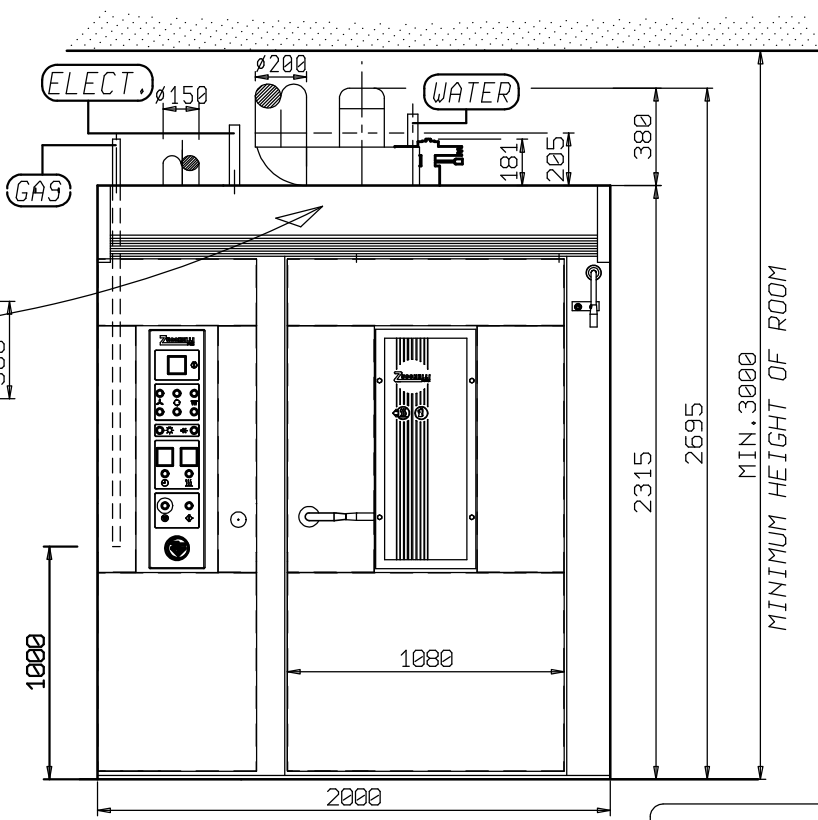
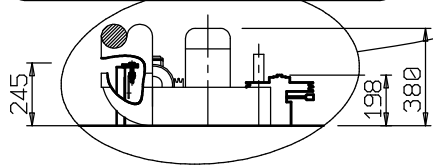
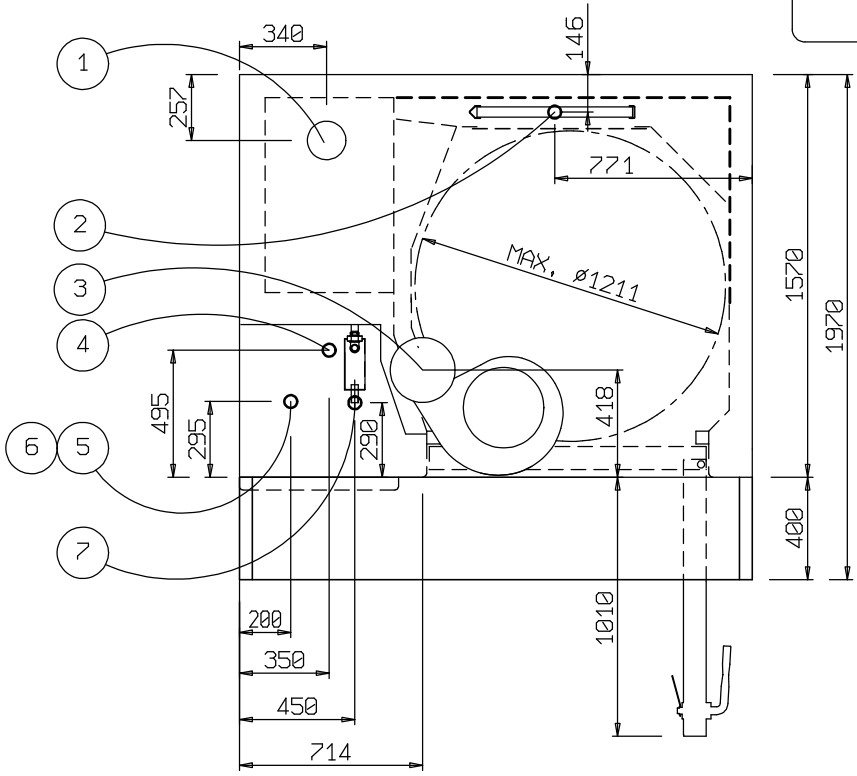


WITH HOISING



TURNTABLE - HOOH



9		
8		
7	WATER DISCHARGE	Ø 1/2"
6	BURNER SUPPLY OIL	Ø 3/8"
5	BURNER SUPPLY GAS	Ø 1" 1/4
4	ELECTRIC ENERGY ARRIVAL	KW 1,5
3	STEAM EXHAUST PIPE	Ø 200
2	STEAM GENERATOR WATER ARRIVAL	Ø 1/2"
1	SMOKE EXHAUST PIPE	Ø 150
POS.	DENOMINATION	

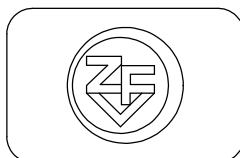
WEIGHT Kg. 1400
 NOZZLE OIL GPH 1,75 A 60°
 NEEDED KCAL OVEN 75.000

TECHNICAL FEACTURES
TOP ROTOR 1C/2 60x90 RN4

BOLL. 1016

DATA 16.04.03

VISTO .



DIS.

DIS.N° POS.393-2

MINIMUM PASSAGE FOR DISSEMBLED OVEN 810x1970

DISEGNO DI PROPRIETA' RISERVATA E NON PUO' ESSERE RIPRODOTTO O MOSTRATO A TERZI AI SENSI DI LEGGE